

Structural analysis, magnetic and transport properties of the $(\text{Ru}_{1-x}\text{Co}_x)\text{Sr}_2\text{GdCu}_2\text{O}_8$ system

R Escamilla¹, A Durán² and R Escudero¹

¹ Instituto de Investigaciones en Materiales, UNAM, A Postal 70-360, México DF 04510, Mexico

² Centro de Ciencias de la Materia Condensada, UNAM, A Postal 2681, Ensenada BC, 22800, Mexico

Received 7 January 2005, in final form 18 May 2005

Published 3 June 2005

Online at stacks.iop.org/SUST/18/1003

Abstract

The effects of Co substitution on the structural and superconducting properties of the $\text{RuSr}_2\text{GdCu}_2\text{O}_8$ compound have been studied. Rietveld refinements of the x-ray diffraction patterns indicate that the cobalt ion progressively replaces ruthenium sites. This replacement induces significant changes on the crystal structure and on the magnetic and superconducting properties. The effects of Co substitution on the superconducting behaviour, and more particularly on the changes induced by the hole doping mechanism, were investigated in $(\text{Ru}_{1-x}\text{Co}_x)\text{Sr}_2\text{GdCu}_2\text{O}_8$ by a ‘bond valence sum’ analysis with Co content from $x = 0.0$ to 0.2 . The weak ferromagnetic transition at $T_M = 138.2$ K is shifted to lower temperature, and suppressed at higher Co content. From the crystallographic point of view the Ru–O(1)–Cu bond angle, associated to the rotation of the RuO_6 octahedra around the c -axis, remains essentially constant when Ru is substituted by Co. Furthermore, increasing Co content has the effect of increasing the weak ferromagnetic moment, which may be interpreted as the main feature responsible for breaking the delicate balance between magnetic and superconducting ordering.

(Some figures in this article are in colour only in the electronic version)

1. Introduction

In the $\text{RuSr}_2\text{GdCu}_2\text{O}_8$ (Ru-1212) compound, both ferromagnetic and superconductivity phenomena coexist at the microscopic level [1, 2]. The ferromagnetic ordering appears at a rather high temperature, about 130–150 K [3, 4], whereas the superconducting transition occurs at low temperature, from about 15 to 45 K. The characteristics of the crystalline structure of this compound can be described based on the high transition temperature compound, $\text{YBa}_2\text{Cu}_3\text{O}_7$ (Y-123). Ru-1212 contains CuO_2 planes, which are separated by single oxygen-less Gd planes; RuO_2 planes replace the equivalent CuO chains as in Y-123. In the RuO_2 planes, the Ru atoms are six coordinated, and form RuO_6 octahedra. Additionally, the structure contains SrO planes which are localized between the CuO_2 and RuO_2 planes. The O(1) oxygen sites are localized in the SrO planes,

whereas the oxygen sites O(2) and O(3) are localized in the CuO_2 and RuO_2 planes, respectively. These planes are connected via the apical oxygen O(1). The CuO_2 planes’ role may be similar to that in the high- T_C cuprates, and directly related to the superconducting formation, whereas the RuO_2 planes are related to magnetic order. Several experimental studies have been carried out in order to determine the role of cationic substitutions in RuO_2 sites [5–7, 9]. For instance, studies of heterovalent substitutions in $\text{Ru}_{1-x}\text{M}_x$ -1212 with ($\text{M} = \text{Nb}^{\text{V}+}$, $\text{Sn}^{\text{IV}+}$) reveal a reduction of magnetism in the RuO_2 planes [8], whereas doping Ru sites with $\text{Cu}^{\text{II}+}$ increases the superconducting transition and reduces the magnetic ordering [9]. Actually, the current understanding of the physical characteristics of this system is that superconductivity and ferromagnetic ordering originate in the CuO_2 and RuO_2 planes, respectively. However, the nature of the competition/coexistence of both

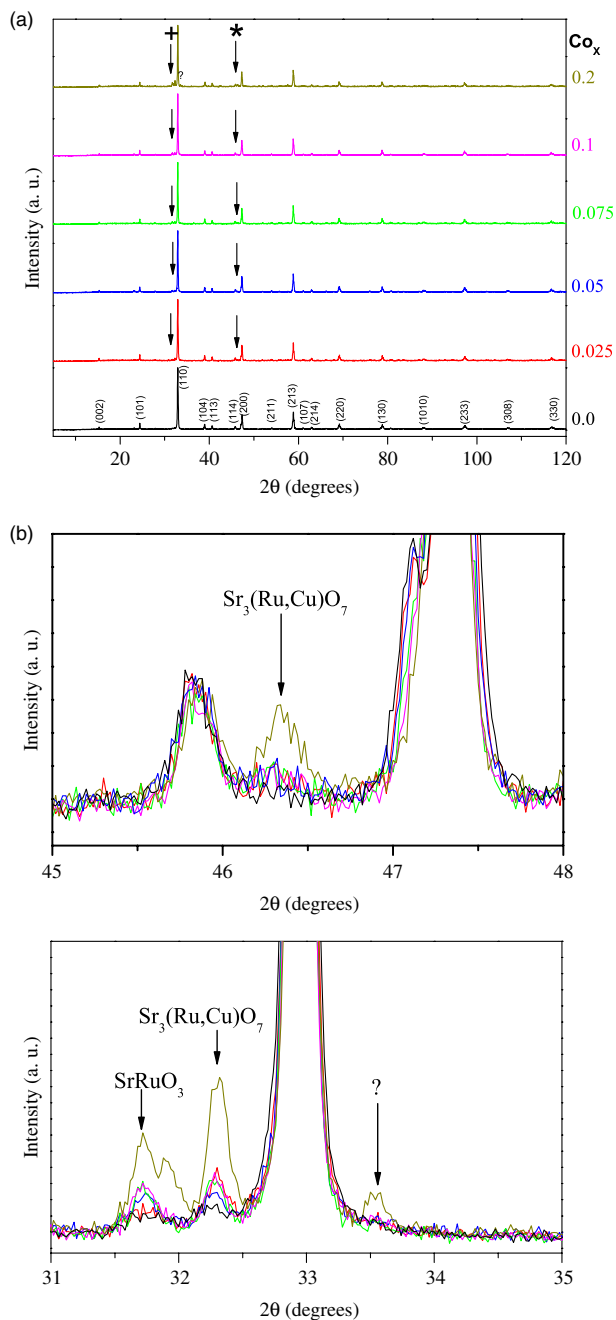


Figure 1. (a) X-ray diffraction patterns for the $\text{Ru}_{1-x}\text{Co}_x$ -1212 samples. The symbols (+ and *) represent the position of the impurities of SrRuO_3 , and $\text{Sr}_3(\text{Ru}, \text{Cu})\text{O}_7$. (b) Amplification of the region where impurities are detected in the main pattern of (a); these are in 2θ region from 31° to 35° , and from 45° to 48° , and correspond to SrRuO_3 , and $\text{Sr}_3(\text{Ru}, \text{Cu})\text{O}_7$, as marked in this figure.

phenomena requires further understanding. In this context we are reporting studies on the effect of Co substitution in Ru sites. The study emphasizes the changes in the crystalline structure and effects on the superconducting and magnetic properties.

2. Experimental details

Polycrystalline samples of $(\text{Ru}_{1-x}\text{Co}_x)\text{Sr}_2\text{GdCu}_2\text{O}_8$ ($x = 0, 0.025, 0.05, 0.075, 0.1, 0.2$) were synthesized by solid

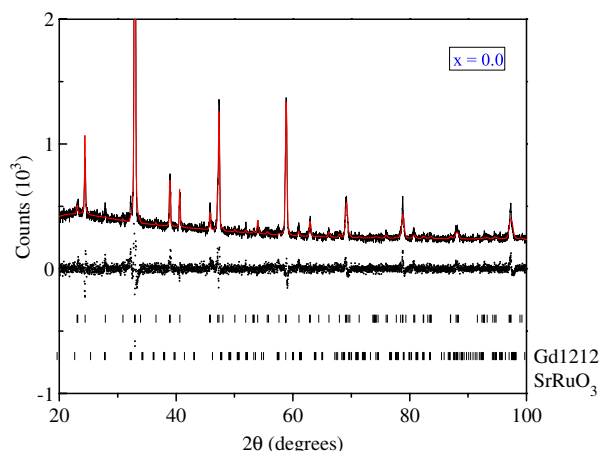


Figure 2. Rietveld refinement on the x-ray diffraction pattern for the $x = 0.0$ sample. Experimental spectrum (dots), calculated pattern (continuous line), difference (middle line) and the calculated peak positions (bottom).

state reaction of oxides: RuO_2 (99%), CoO (99.999%), Gd_2O_3 (99.9%), CuO (99.99%) and SrCO_3 (98+%). After calcinations in air at 900°C , the samples were ground, pressed into pellets and annealed in oxygen at 1000°C . Phase identification was performed using a Siemens D5000 x-ray diffractometer, with $\text{Cu K}\alpha$ radiation and Ni filter. Intensities were measured in steps of 0.02° for 14 s in the 2θ range from 5° to 120° , at room temperature. Crystallographic phases were identified by comparison with x-ray patterns in the JCPDS database. The crystalline structure was refined with the program Rietica [10] (Rietveld program for quantitative phase analysis of polycrystalline mixtures with multi-phase capability). The Bond Valence Sum program was used to distinguish the oxidation states of metals Ru and Cu [11]. The superconducting transition temperatures were determined with a closed-cycle helium refrigerator by measuring the resistance versus temperature characteristic by the standard four-probe technique, from 250 to 14 K. Measurements of ac susceptibility, dc susceptibility, and magnetization versus magnetic field were carried out using a superconducting Quantum Interference Device Magnetometer, (MPMS Quantum Design), from 2 to 300 K and applied field up to ± 40 kOe.

3. Results and discussion

Figure 1(a) shows x-ray diffraction patterns for the $\text{Ru}_{1-x}\text{Co}_x$ -1212 samples. The structural analysis indicate that all samples correspond to the Ru-1212 structure, with negligible content of impurities. In figure 1(b) we also show an amplification of the region on the x-ray data where impurities were detected at the 2θ position; these correspond to $\text{Sr}_3(\text{Ru}, \text{Cu})\text{O}_7$ (ICDD no 51-0307), and SrRuO_3 (ICDD no 28-1250). We can note that those are negligible, also at the maximum Co concentration. In the refinement process we took into account the presence of secondary phases and the substitution of Co ions in Ru and Cu sites. Figure 2 shows an example of a fitted pattern for the undoped sample. More details of the structural characteristics are listed in table 1; the first three rows show the trend of change

Table 1. Structural parameters for $\text{Ru}_{1-x}\text{Co}_x$ -1212 at 295 K. (Note: space group: $P4/mmm$ (no 123). S_{ij} (vu) is the bond valences sum, p is the amount of charge transferred between the CuO_2 and RuO_2 plane. N is the cobalt occupancy factor. Atomic positions: Ru: 1b (0, 0, 1/2); Gd: 1c (1/2, 1/2, 0); Sr: 2h(1/2, 1/2, z); Cu: 2g (0, 0, z); 2O(1) in 8s (x , 0, z) \times 1/4, 4 O(2) in 4i (0, 1/2, z), and 2O(3) in 4o (x , 1/2, 1/2) \times 1/2 position.)

(x)		0.0	0.025	0.05	0.075	0.1	0.2
Ru/Co	a (Å)	3.8367(3)	3.8374(2)	3.8382(2)	3.8388(4)	3.8393(4)	3.8408(4)
	c (Å)	11.568(3)	11.5622(2)	11.5584(3)	11.5544(3)	11.5505(4)	11.5417(4)
	V (Å ³)	170.29	170.26	170.28	170.27	170.25	170.25
	S_{ij} (vu)	4.69	4.71	4.72	4.73	4.79	4.80
	p	0.155	0.145	0.14	0.135	0.105	0.1
	B (Å ²)	0.82(9)	0.86(8)	1.39(8)	0.82(8)	0.74(8)	1.5(1)
	N	—	0.02(1)	0.04(2)	0.07(2)	0.09(1)	0.18(1)
Gd	B (Å ²)	2.06(7)	1.72(6)	1.52(6)	2.09(6)	1.53(5)	2.09(9)
Sr	z	0.3067(4)	0.3067(4)	0.3066(2)	0.3066(2)	0.3066(2)	0.3066(2)
	B (Å ²)	0.84(7)	0.50(5)	0.99(7)	0.70(5)	0.54(5)	0.25(7)
Cu	z	0.1452(2)	0.1455(2)	0.1456(3)	0.1457(3)	0.1457(3)	0.1470(3)
	S_{ij} (vu)	2.05	2.04	2.04	1.62	1.61	1.60
O(1)	p	0.05	0.04	0.04	-0.38	-0.39	-0.4
	B (Å ²)	1.04(8)	1.40(7)	0.70(8)	0.43(23)	0.98(6)	1.2(1)
	x	0.0390(1)	0.0389(2)	0.0390(1)	0.0390(1)	0.0390(2)	0.0390(2)
	z	0.3335(3)	0.3337(3)	0.3338(4)	0.3339(4)	0.3347(4)	0.3347(4)
O(2)	B (Å ²)	5.8(8)	5.4(7)	3.9(6)	7.2(7)	6.9(7)	8.5(1.3)
	z	0.1295(1)	0.1297(4)	0.1295(3)	0.1295(3)	0.1295(4)	0.1295(4)
O(3)	B (Å ²)	2.9(4)	2.1(3)	0.7(2)	1.0(3)	2.0(3)	1.9(5)
	x	0.1139(1)	0.1140(1)	0.1141(2)	0.1140(1)	0.1140(1)	0.1140(2)
	B (Å ²)	5.8(6)	5.8(5)	5.7(4)	5.6(4)	5.1(5)	5.1(8)
	% Gd1212	94.91(2)	95.83(1)	95.43(1)	93.28(2)	86.16(3)	83.40(6)
	% SrRuO ₃ ^a	2.1(1)	3.8(1)	2.70(8)	5.1(1)	3.1(1)	8.0(1)
	% Sr ₃ Ru ₂ O ₇ ^a	2.9(4)	0.3(2)	1.9(2)	1.6(3)	3.3(3)	6.7(8)
	R_p (%)	8.8	6.0	5.9	6.0	5.9	6.5
	R_{wp} (%)	11.5	8.3	8.2	8.7	8.0	9.1
	R_{exp} (%)	9.2	3.7	3.6	3.6	3.6	3.7
	χ^2 (%)	1.2	2.2	2.3	2.4	2.2	2.5

^a % of impurity in the phase.

of the lattice parameters at room temperature with increased cobalt content. It is observed that as x is increased, the c -axis parameter decreases, mainly as a result of the decrease of the Ru/Co–O(1) average bond length. The a -axis increases slightly, and as consequence of those changes the unit-cell volume decreases slightly. This result may be explained considering the coordination numbers and the ionic radii of the $\text{Co}^{\text{III}+}$, $\text{Cu}^{\text{II}+}$ and $\text{Ru}^{\text{V}+}$ ions. It is noted that the $\text{Co}^{\text{III}+}$ radius for coordination number six changes from 0.545 to 0.61 Å for low spin and high spin configuration, respectively, whereas $\text{Cu}^{\text{II}+}$ with a size of 0.65 Å for coordination number five, and $\text{Ru}^{\text{V}+}$ for coordination number six have a size of 0.565 Å [12]. From these values, it is clear that the decrease of the unit cell volume can be related to the substitution of $\text{Co}^{\text{III}+}$ in the low spin configuration state into the $\text{Ru}^{\text{V}+}$ sites. This behaviour is consistent with the observed changes in $\text{Y}_1\text{Ba}_2\text{Cu}_3\text{O}_7$, when $\text{Co}^{\text{III}+}$ is substituted in the low spin configuration into the CuO chains [13].

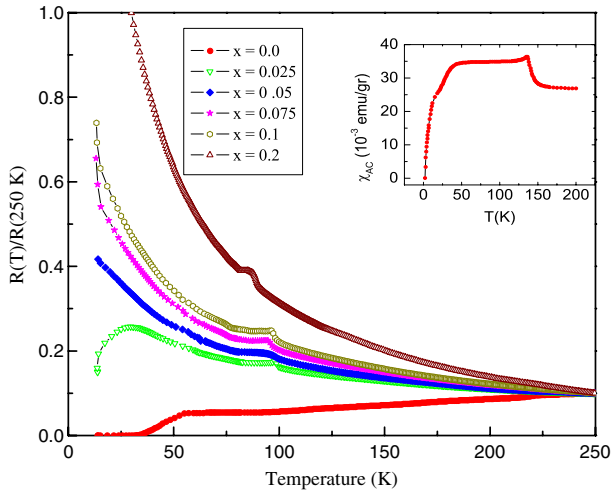
From the results of our structural refinement, we can conclude that cobalt atoms mainly occupy the Ru sites, which give place to substantial changes in the Ru/Co–O(1) bond length, rather than in the Ru/Co–O(3) bond length. As a consequence, an increase in the octahedral distortion (Δ_{oct}) is observed; from 0.184 Å ($x = 0.0$) to 0.287 Å ($x = 0.2$); see table 2. Furthermore, the Ru–O(1)–Cu bond angle associated to the rotation of RuO_6 octahedra around the c -axis remains essentially constant. In contrast, the Cu–O(2)–Cu buckling angle changes from 169.2° ($x = 0.0$) to 167.99° ($x = 0.2$).

On the other hand, the bond valence sum (BVS) shows that as x is increased, the valence of the Ru increases, whereas the Cu decreases; see table 2. For undoped samples the calculated Ru valence was 4.69. This result is in agreement with that obtained by NMR and XANES studies, which indicate mixed ionic states of about 40% $\text{Ru}^{\text{IV}+}$ and 60% $\text{Ru}^{\text{V}+}$ [14, 15]. Thus, the main effect of Co substitution is a strong increase of the BVS at the Ru site, accompanied by an important decrease of the BVS at the Cu site. In table 1 we show these results.

The temperature dependence of normalized resistance at zero external field for all samples is shown in figure 3. For the sample with $x = 0$, the resistance shows a metallic-like behaviour, with a superconductivity onset at about 57 K, and reaching zero resistance at 33 K. In contrast, doped samples do not display superconductivity below 10 K. At the composition with $x = 0.025$, the normal state resistance starts to increase at high temperature with a downturn at low temperature, while for higher compositions $x > 0.025$ a semiconducting-like behaviour is observed. In the inset of figure 3 we show the real part of the ac susceptibility data, for the undoped sample. A small upward trend at about 138.2 K marks the onset of the spontaneous magnetization, indicating weak ferromagnetic transitions (T_M). At 35 K there is noted a continuous decrease of the ac susceptibility, indicating the superconducting transition, but without a diamagnetic signal. This fact might indicate either microstructural effects connected with sample granularity (macroscopic screening currents) [16] or competing effects between magnetism and

Table 2. Bond lengths (Å), bond angles (deg) and octahedral distortion (Δ_{oct}) for $\text{Ru}_{1-x}\text{Co}_x$ -1212.

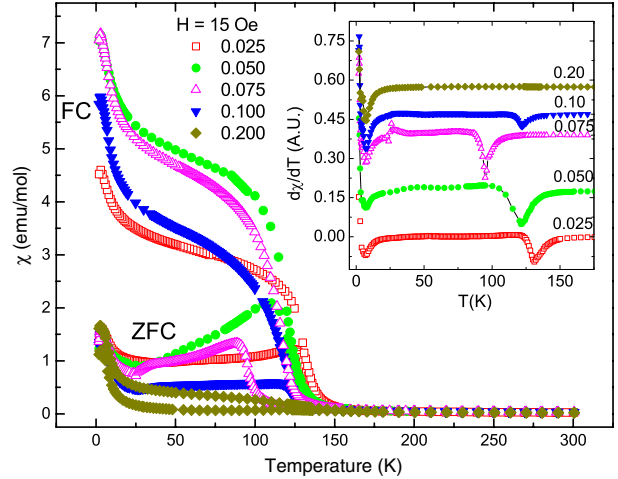
x	0.0	0.025	0.05	0.075	0.1	0.2
Ru–O(1): 2	1.931(2)	1.931(2)	1.928(2)	1.926(2)	1.924(2)	1.914(2)
Ru–O(3): 4	1.967(2)	1.968(3)	1.968(1)	1.969(1)	1.969(3)	1.970(1)
$\langle \text{Ru–O} \rangle_{\text{average}}$	1.956	1.956	1.955	1.955	1.954	1.951
Δ_{oct}	0.184	0.189	0.205	0.220	0.230	0.287
Cu–O(1)	2.182(3)	2.182(2)	2.180(2)	2.180(2)	2.179(2)	2.171(2)
Cu–O(2)	1.927(2)	1.927(1)	1.928(2)	1.928(1)	1.929(1)	1.931(1)
Ru–O(3)–Ru	154.3(2)	154.3(3)	154.3(1)	154.3(1)	154.3(1)	154.3(2)
Cu–O(2)–Cu	169.2(1)	169.1(2)	168.9(2)	168.9(3)	168.0(2)	168.0(1)
Ru–O(1)–Cu	171.6(2)	171.6(2)	171.6(2)	171.6(2)	171.6(2)	171.6(2)

**Figure 3.** Normalized resistances as a function of temperature in $(\text{Ru}_{1-x}\text{Co}_x)$ -1212 for different Co concentrations as indicated in the figure. The inset shows the ac susceptibility for $x = 0.0$ measured at 730 Hz and field amplitude of 3.0 Oe.

superconducting ordering, as have been observed in rare earth intermetallic compounds [17]. These ac data show that our samples are structurally comparable to other samples produced and reported by other laboratories [3, 4].

In order to explain the T_C degradation in our samples, we determined the amount of charge (p) transferred between the CuO_2 and RuO_2 planes. We took into account the simple model of valence ($\text{Ru}: 5 - 2p$, $\text{Cu}: 2 + p$) [6]. The p value comes from the structural data using BVS that make use of the sensitivity of Cu–O bond lengths at the hole concentration [18]. Our calculations show that with increasing x , p changes from 0.155 to 0.1, and from 0.05 to -0.4 for Ru and Cu respectively; see table 2. Moreover, Jorgensen *et al* [19] propose that the highest T_C is achieved in structures with flat and square CuO_2 planes and long apical Cu–O bond length. This fact rests on the assumption that the buckling of CuO_2 planes, and the shortening of the apical Cu–O bond, localize holes. Our results reveal that as x increases, the buckling of the CuO_2 plane increases, and the apical Cu–O bond length decreases. Therefore, the T_C degradation may be associated with the increase of the buckling of the CuO_2 planes and the decrease of the apical Cu–O bond length, due to changes of charge (p) in the CuO_2 and RuO_2 planes.

We performed measurements of dc susceptibility as a function of temperature at low magnetic field (15 Oe), in zero

**Figure 4.** Measurements of dc susceptibility as a function of temperature for $(\text{Ru}_{1-x}\text{Co}_x)$ -1212. We show the ZFC and FC modes with an external magnetic field of 15 Oe. The inset shows $d\chi/dT$ versus T for compositions $0 < x < 0.2$.

field cooling (ZFC) and field cooling (FC) conditions, from 300 to 2 K as shown in figure 4. The Meissner effect is not observed there. The inset of figure 4 shows the effect of Co substitution on the magnetic characteristics for all samples. The ferromagnetic T_M and the antiferromagnetic T_N transitions are clearly noted with the help of the susceptibility derivative data ($d\chi/dT$). The results reveal that T_M decreases as the Co concentration is increased, and it disappears at a Co concentration of $x = 0.200$. Moreover, in the range of compositions for $x < 0.10$ we observed a clear splitting of the ZFC and FC measurements close to T_M , that disappears for $x = 0.200$ (the inset presents only ZFC measurement). It is important to note that not only does the Co concentration have an effect on T_M , but also the external magnetic field; as an example of this behaviour, we show in figure 5 measurements of χ – T for the Co composition $x = 0.10$. These measurements were performed at ZFC and FC. The splitting of the data is clearly observed at low fields with two branches (note that the high susceptibility branch is FC). However, as the field is higher the splitting is small and it disappears at 10 and 20 kOe. The extended extracted data for measurements in other Co compositions are illustrated in figure 6(a). There, it seems that as the Co concentration is increased, the magnetic transition T_M is shifted to low temperature, but depending also on the applied field. Furthermore, increasing the magnetic field shifts T_M to high temperature (this also depends on

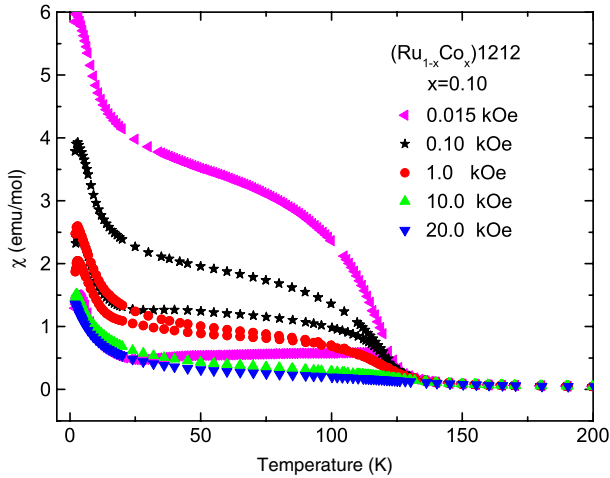


Figure 5. Measurements of χ versus T (ZFC and FC modes) at several external magnetic fields for $(\text{Ru}_{1-x}\text{Co}_x)\text{-1212}$ for the cobalt content $x = 0.10$.

the Co concentration); for example, at 1 kOe T_M is about 133 K when $x = 0.025$, but when the field is 30 kOe, T_M is shifted to about 155 K. T_M disappears for the composition with $x = 0.10$ when the field is 30 kOe. Thus, both the Co concentration and the magnetic field may destroy T_M . On the other hand, in figure 6(b) we show that T_N is noticeably affected by the intensity of the magnetic field, with no effect in Co concentration. In this figure it is observed that T_N is shifted from 8 K at 1 kOe to about 2.6 K at 30 kOe. This behaviour is quite typical of layered structures; the external magnetic field tends to saturate the paramagnetic moment of the Gd sublattice [20]. Thus, the susceptibility results suggest that the dominant magnetic character is antiferromagnetic (AFM) order at low temperatures, and canted ferromagnetism at high temperature since the transverse components of spins differ from one crystallographic site to another and the equilibrium angles depend on both the external magnetic field and dopant content. These experimental evidences have been well documented in doped manganites, cuprates and intermetallic compounds [20–22]. In order to understand this susceptibility behaviour we can assume that two independent contributions exist: one for each Gd and Ru sub lattices. The Ru sublattice orders as a weak ferromagnet at T_M , while the Gd one remains paramagnetic and orders antiferromagnetically at lower temperature. To separate the two contributions and to observe the behaviour as a function of Co content, we estimated, at high-temperature, the Ru moments by fitting the susceptibility data considering two contributions, i.e. $\chi^{-1} = [(C/(T - \Theta))_{\text{Gd}} + (C/(T - \Theta) + \chi_0)_{\text{Ru}}]^{-1}$. In the first term the Curie constant C_{Gd} was taken as the theoretical value of $7.9 \text{ emu K mol}^{-1}$ and the Curie temperature as $\Theta_{\text{Gd}} = -9 \text{ K}$. This value for Θ_{Gd} was used by Butera *et al* [23, 24], and was obtained performing EPR measurements. In the second term we included the Curie constant C_{Ru} , the Curie temperature (Θ_{Ru}), and the susceptibility χ_0 which is temperature independent because of the nonlinearity of the inverse susceptibility data in the measured range (170–300 K) as seen in figure 7. In this fitting process both C_{Gd} and Θ_{Gd} were kept fixed in order to observe the Ru effective moment behaviour; these are plotted in the inset of figure 7.

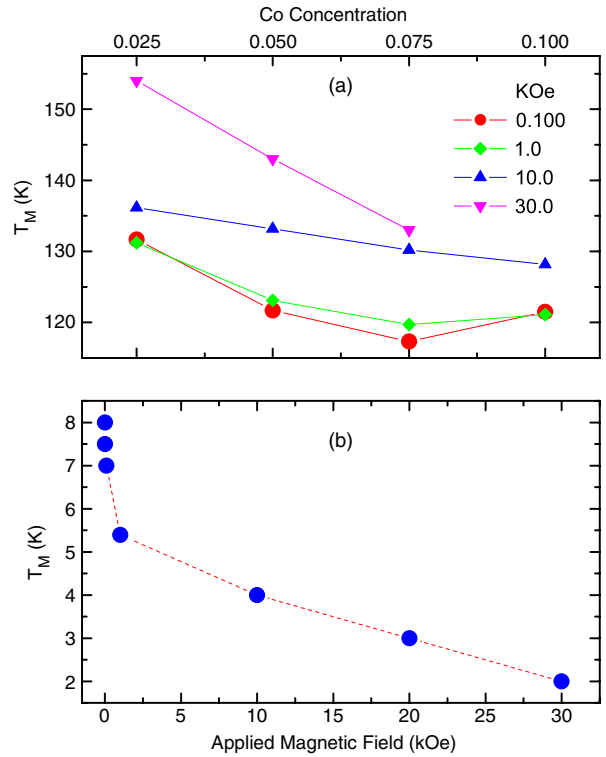


Figure 6. (a) Behaviour of T_M as a function of Co content at several applied magnetic fields. (b) Antiferromagnetic transition T_N as a function of applied magnetic field. T_N is independent of Co content.

A continuous increase of the effective moment μ_{eff} is seen from $\sim 1.06 \mu_B$, for $x = 0$ – $2.17 \mu_B$ at $x = 0.075$. Increasing the concentration of Co atoms affects μ_B , reducing it to a value of about $1.28 \mu_B$. On the other hand, the Curie temperature, Θ_{Ru} changes from $153.9 \pm 0.5 \text{ K}$ to $112 \pm 2.5 \text{ K}$, for $0.025 < x < 0.10$ and then increases again from $x > 0.10$ to a value of about $157.7 \pm 1.2 \text{ K}$. To have a better understanding of this magnetic behaviour, we performed magnetization versus applied magnetic field (M – H) measurements at $T = 2 \text{ K}$ (see figure 8). The hysteresis loops at low field (main panel) is attributed to the weak magnetism of the Ru/Co sublattice, and the dependence of the magnetization in the high field region (inset (b)) to the antiferromagnetic order of the Gd ion. A trend to saturation is observed with a value at about $7.8 \mu_B \text{ fu}^{-1}$, which corresponds to the Gd moment, as obtained by neutron diffraction studies ($\sim 7.0 \mu_B$) [25]. This experimental value confirms the two expected contributions: the Gd moment, plus $0.8 \mu_B \text{ fu}^{-1}$ due to the ruthenium sublattice in the low spin state ($1 \mu_B$ for $3d^3$, $S = 1/2$). On the other hand, the behaviour of the remanent magnetization (M_R) associated to the Ru sublattice as a function of Co content is plotted in inset (a). M_R increases from $0.14 \mu_B \text{ fu}^{-1}$ for $x = 0$ to $0.49 \mu_B \text{ fu}^{-1}$ for $x = 0.05$, and then decreases to $0.05 \mu_B \text{ fu}^{-1}$ at a concentration about $x = 0.2$. The small value of M_R for $x = 0$ is consistent with the analysis of neutron diffraction measurements by Lynn *et al* [25], where an upper limit of about $0.1 \mu_B$ was obtained for the ferromagnetic peaks below T_M . Again, it is worthwhile noting that both M_R and μ_{eff} extracted from the Ru sublattice (inset of figure 7) increase as Co is introduced in the Ru sublattice (for $x < 0.10$). This behaviour is contrary to Sn

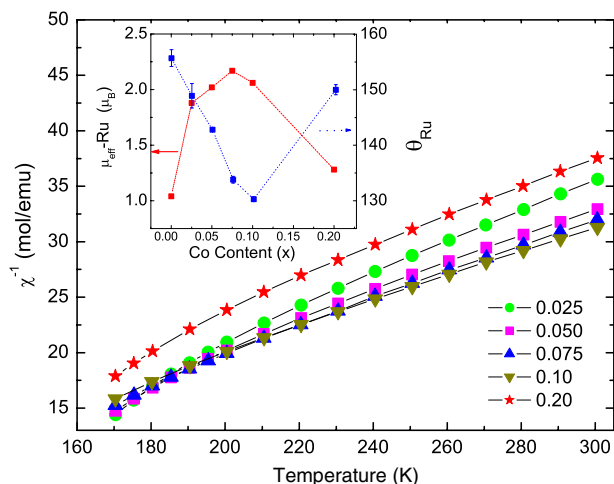


Figure 7. The temperature dependence of the inverse molar susceptibility χ^{-1} for $(\text{Ru}_{1-x}\text{Co}_x)\text{-1212}$ with $0.025 > x > 0.2$ at 1 kOe. The inset shows the effective moments μ_{eff} and the Curie-Weiss temperature for the Ru sublattice as a function of Co content (the line is a guide to the eye).

and Nb as in Eu-1212 [26]. However, these characteristics are still more intriguing in the Ce, Eu-1222 [27] and Gd-1212 [28] compounds doped with iron where a decreasing of the magnetic moment in the Ru sublattice was observed. It is possible that this increase of the magnetic moment in the Ru/Co site may be due to an enhancement of the antisymmetric exchange, causing the effect that the spins are canted in the ab -plane as has been argued in several intermetallic and ruthenocuprate compounds [20, 22, 29, 30], where a delicate balance among the subtle variations in composition, magnetic structure, and superconducting state may exist. Furthermore, recent studies [31] have shown that complete substitution of Ru by Co gives a paramagnetic material which is accomplished by depleting oxygen in the structure. The drastic reduction of magnetic moment for $x > 0.1$ accompanied with the strong octahedral distortion observed here could be related to this fact.

4. Conclusions

In summary, we have presented a detailed crystallographic and magnetic study of the $(\text{Ru}_{1-x}\text{Co}_x)\text{Sr}_2\text{GdCu}_2\text{O}_8$ system by x-ray diffraction at room temperature and magnetization measurements. The x-ray diffraction results indicate that Co ions occupy the Ru sites. This replacement causes significant changes in the Ru-O(1) bond length, inducing an increase in the octahedral distortion. In contrast to previous reports, we found that the bond angle associated with the rotation around the c -axis remains essentially constant. From the BVS analysis, we demonstrate that as x increases, the amount of charge (p) decreases in the CuO_2 and RuO_2 planes; this could explain the observed T_C reduction with Co content. Finally, we found from magnetic measurements that a gradual introduction of Co ions into the structure enhances the magnetic moment, μ_{eff} , and M_R via the ferromagnetic component. Thus we believe that this increase of the magnetic moment might be responsible for the delicate balance between weak ferromagnetism and superconductivity via pair breaking or trapping holes in the CuO_2 planes.

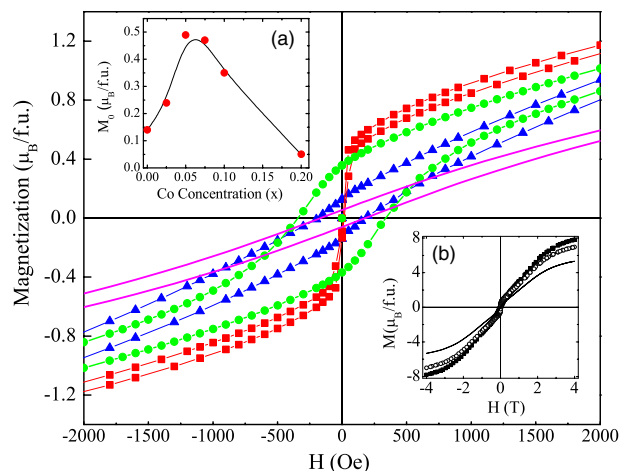


Figure 8. Hysteresis loops in the low field region for $(\text{Ru}_{1-x}\text{Co}_x)\text{-1212}$ with $x = 0$ (full square), 0.05 (open triangle), 0.10 (full triangle) and 0.20 (solid line). Inset (a) shows the remanent moment (M_R) as a function of Co content (the solid line is a guide to the eye). Inset (b) shows the magnetization at high field 40 kOe for $x = 0$ (full square), $x = 0.075$ (open circle) and $x = 0.2$ (solid line).

Acknowledgments

Economical support is acknowledged to UC-MEXUS. We thank M Sainz and F Silvar for technical support and D Bucio for assistance in sample preparation.

References

- [1] Tallon J L, Bernhard C, Bowden M E, Gilbert P W, Stoto T M and Pringle D 1999 *IEEE Trans. Appl. Supercond.* **9** 1696
- [2] Bernhard C, Tallon J L, Niedermayer Ch, Blasius Th, Golnik A, Brücher E, Kremer R, Noakes D, Stronach C and Ansaldo E 1999 *Phys. Rev. B* **59** 14099
- [3] Felner I, Asaf U, Reich S and Tsabba Y 1999 *Physica C* **311** 163
- [4] Klamut P W, Dabrowski B, Maxwell M, Mais J, Chmaissem O, Kruk R, Kmiec R and Kimball C W 2000 *Physica C* **341-348** 455
- [5] Tallon J L 1999 *IEEE Trans. Appl. Supercond.* **9** 1696
- [6] McLaughlin A C and Attfield J P 1999 *Phys. Rev. B* **60** 14605
- [7] Klamut P W, Dabrowski B, Mais J and Maxwell M 2001 *Physica C* **350** 24
- [8] McLaughlin A C, Janowitz V, McAllister J A and Attfield J P 2000 *Chem. Commun.* **14** 1331
- [9] Klamut P B, Dabrowski B, Kolesnik S, Maxwell M and Mais J 2001 *Phys. Rev. B* **63** 224512
- [10] Howard C J, Hunter B A and Swinkels D A J 1997 *Rietica IUCR Powder Diffr.* **22** 21
- [11] Wills A S and Brown I D 1999 *Valist*, CEA, France Program available from <ftp://ftp.ill.fr/pub/dif/valist/>
- [12] Shannon R D 1976 *Acta Crystallogr. A* **32** 751
- [13] Miceli P F, Tarascon J M, Greene L H, Barboux P, Rotella F J and Jorgensen J D 1988 *Phys. Rev. B* **37** 59
- [14] Kumagai K-I, Takada S and Furukawa Y 2001 *Phys. Rev. B* **63** 180509
- [15] Liu R S, Jang L-Y, Hung H-H and Tallon J L 2001 *Phys. Rev. B* **63** 21250
- [16] McLaughlin A C, Zhou W, Attfield J P, Fitch A N and Tallon J L 1999 *Phys. Rev. B* **60** 7512

- [17] Durán A, Muñoz E, Bernès S and Escudero R 2000 *J. Phys.: Condens. Matter* **12** 7595
- [18] Brown I D 1989 *J. Solid State Chem.* **82** 122
- [19] Jorgensen J D, Hiks D G, Chmaissem O, Argyriou D N, Mitchell J F and Dabrowski B 1996 Recent developments in high T_c superconductivity *Proc. 1st Polish-US Conf. (Springer Lecture Notes in Physics)* ed J Klamut, B W Veal, B M Dabrowski and P W Klamut (Berlin: Springer)
- [20] Cho B K, Canfield P C and Johnston D C 1996 *Phys. Rev. B* **53** 8499
- [21] Deac I G, Mitchell J F and Schiffer P 2001 *Phys. Rev. B* **63** 172408
- [22] Coffey II D, Rice T M and Zhang F C 1991 *Phys. Rev. B* **44** 10112
- [23] Butera A, Fainstein A, Winkler E and Tallon J 2001 *Phys. Rev. B* **63** 054442
- [24] Fainstein A, Winkler E, Butera A and Tallon J 1999 *Phys. Rev. B* **60** 597
- [25] Lynn J W, Keimer B, Ulrich C, Bernhard C and Tallon J L 2000 *Phys. Rev. B* **61** R14 964
- [26] Williams G V M, Lee H K and Krämer S 2003 *Phys. Rev. B* **67** 104514
- [27] Felner I and Asaf U 1997 *Physica C* **292** 97
- [28] Escamilla R, Morales F, Akachi T and Gómez R 2005 *Supercond. Sci. Technol.* **18** 798–804
- [29] Lynn J W, Skanthakumar S, Huang Q, Sinha S K, Hossain Z, Gupta L C, Nagarajan R and Godart C 1997 *Phys. Rev. B* **55** 6584
- [30] Duran A, Bernès S and Escudero R 2002 *Phys. Rev. B* **66** 212510
- [31] Awana W P S, Malik S K, Yelon W B, Karppinen M and Yamauchi H 2002 *Physica C* **378–381** 155